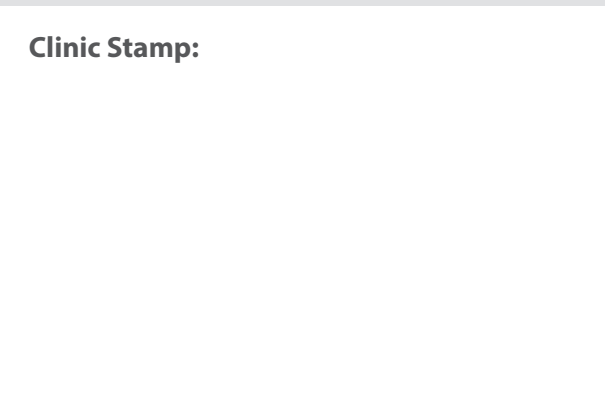


Live Life with a
ClearView

ClearView™ 3
Multifocal IOL



Embrace life with a **ClearView** at all distances.

The ClearView™ 3 Multifocal lens implant for the treatment and correction of cataracts and presbyopia

ClearView™ 3
Multifocal IOL



www.clearviewlens.com
www.lenstec.com

PKB87 Rev 2

Frustrated with your vision?

Conditions

Conditions

There is an option



Cataracts

are a natural occurrence as we age and cause the natural lens to become cloudy and impair vision. This can be corrected by removing the natural lens (cataract), and replacing it with an artificial lens.



Improving your lifestyle

The aging process is one thing that no one can stop, and as a consequence, your eyesight gradually deteriorates.

This can manifest itself in many ways, whether it is the onset of presbyopia or cataracts, coupled with possible existing conditions such as **myopia** and **hyperopia**, which can lead to frustration.

You want to stay active in your life; however your range of vision can slow you down. Therefore you turn to options such as contact lenses and eyeglasses for a solution. However, these options may not address your problems if you have a cataract.

This no longer needs to be the case. Advancements in eye surgery allows your eye surgeon to offer options that help improve your active lifestyle by providing a full range of vision.

The ClearView™ 3 is the next generation presbyopia correcting lens.



Myopia (near sightedness)

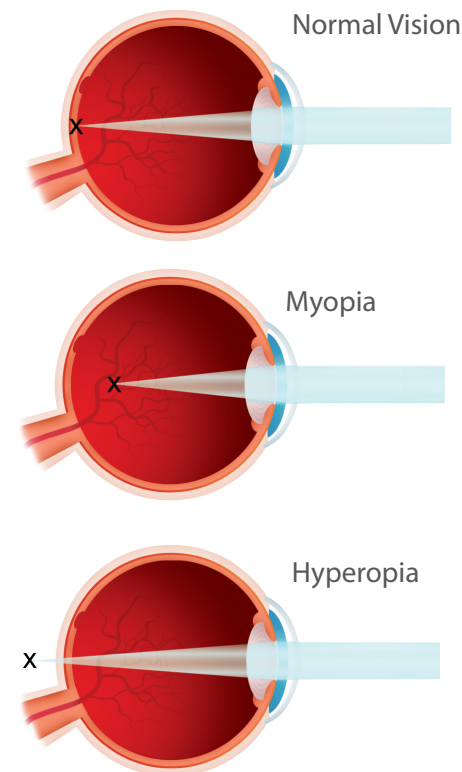
is when the image is focused in front of the retina rather than directly on its surface, resulting in blurred distance vision.

Hyperopia (far sightedness)

is when the image is focused behind the retina rather than directly on its surface, resulting in blurred near vision.

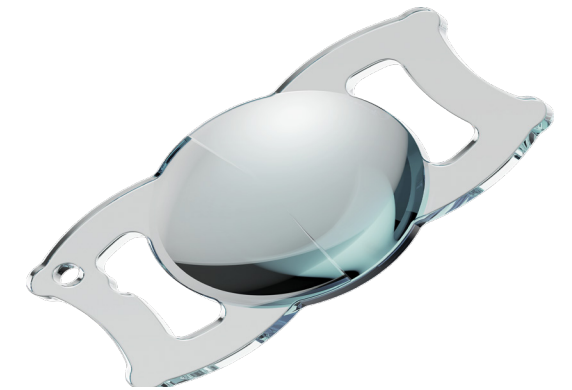
Presbyopia

is an age related condition where the human eye loses the ability to focus on near objects, making it difficult to read and frustrating to perform tasks involving near vision.



Key = X Demonstrates the focus point

The ClearView™ 3 Multifocal lens is designed to mimic your natural lens. It allows you to achieve excellent distance, intermediate, and near vision without needing to tilt your head, leading to greater spectacle independence. With no concentric rings, patients reported a low incidence of visual disturbances such as glare and halos.



ClearView™ 3
Multifocal IOL

Innovation & Accuracy by Design

Bi-Aspheric lenses mimic the natural focusing ability of the human eye. These lenses are used in high-end binoculars and cameras because they allow wider peripheral vision, visual range and depth of focus; creating the clearest of images.

Combined with micro-precision optics, manufactured with up-to 300% tighter tolerances than industry standard, and more incremental powers for your surgeon to choose from, the ClearView™ 3 Multifocal intraocular lens provides an enhanced and accurate optic, resulting in a clearer focus for near, far and mid-range vision.