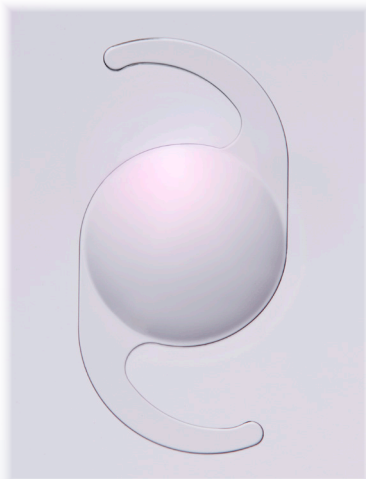


# Softec I



**Bringing a  
Clear View of  
the World**



## **Softec I: Quality Meets Value**

- » Single-piece acrylic
- » Proven C-loop design
- » Always right-way design
- » Uniplanar bi-convex

**LENS<sup>®</sup>  
TEC** 

# Softec I

## Softec I Technical Specifications†

<b>Optic Size</b>	5.75 mm
<b>Optic Type</b>	Equiconvex
<b>Length</b>	12.00 mm
<b>Haptic Style</b>	Modified C
<b>Angulation</b>	0 Degrees
<b>Positioning Holes</b>	0
<b>Construction</b>	1 Piece
<b>Optic Material</b>	Acrylic (26% Water Content)

†A Constant and A/C Depth figures shown are strictly guidelines for the calculation of implant power. Lenstec recommends that surgeons develop their own values based on technique, measuring equipment, and desired postoperative results.

### Constants (Optical Interferometry):\*

<b>Immersion</b>	A = 118.43
<b>SRK/T</b>	A = 118.43
<b>Holladay1</b>	sf = 1.47
<b>Hoffer Q</b>	pACD = 5.22

\*i.e. Using IOL Master, LENSTAR Optical Biometers

### Diopter Steps:

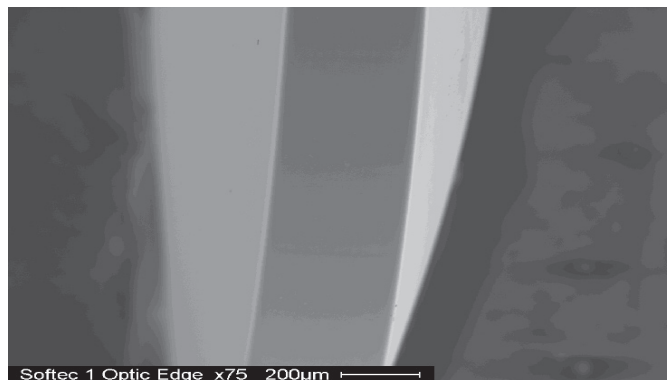
<b>Whole - US Only</b>	+5.00 to +36.00
<b>Whole</b>	-5.00 to +36.00
<b>Half</b>	+10.50 to +29.50

## Uniplanar Design

The Softec I is a C-Loop, one-piece hydrophilic acrylic with a uniplanar design and equal biconvex spherical optic with square edge technology.



## 360-Degree Square Edge Technology



## Proven Quality - FDA Approved

Lenstec is one of eight companies in the world approved by FDA (Food and Drug Administration) to sell intraocular lenses in the U.S. market. All products have CE certificate, are approved by BSI (British Standards Institute) and are ISO quality system certified.

### World Headquarters

Lenstec, Inc.  
1765 Commerce Ave. N.  
St. Petersburg, FL 33716  
USA

Tel: 727-571-2272  
Fax: 727-571-1792  
Email: [lenstec@lenstec.com](mailto:lenstec@lenstec.com)

### Lenstec Barbados

Lenstec Barbados Inc.  
Airport Commercial Centre  
Pilgrim Road, Christ Church  
BARBADOS BB17092

Tel: 246-420-6795  
Fax: 246-420-6797  
Email: [lenstecbarbados@lenstec.com](mailto:lenstecbarbados@lenstec.com)

### Lenstec UK

Lenstec Barbados Inc.  
Lenstec House  
Unit 8, Mariner Court  
Calder Park, Wakefield  
West Yorkshire WF4 3FL  
England

Tel: +44 (0)1924 382 678  
Fax: +44 (0)1924 850 454  
Email: [lenstecuk@lenstec.com](mailto:lenstecuk@lenstec.com)

